

13790510059

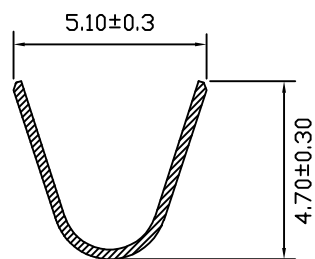
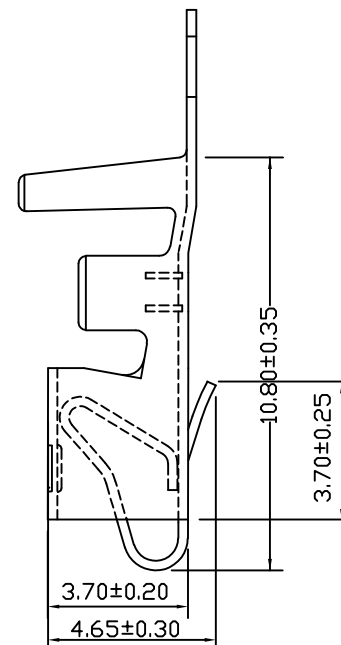
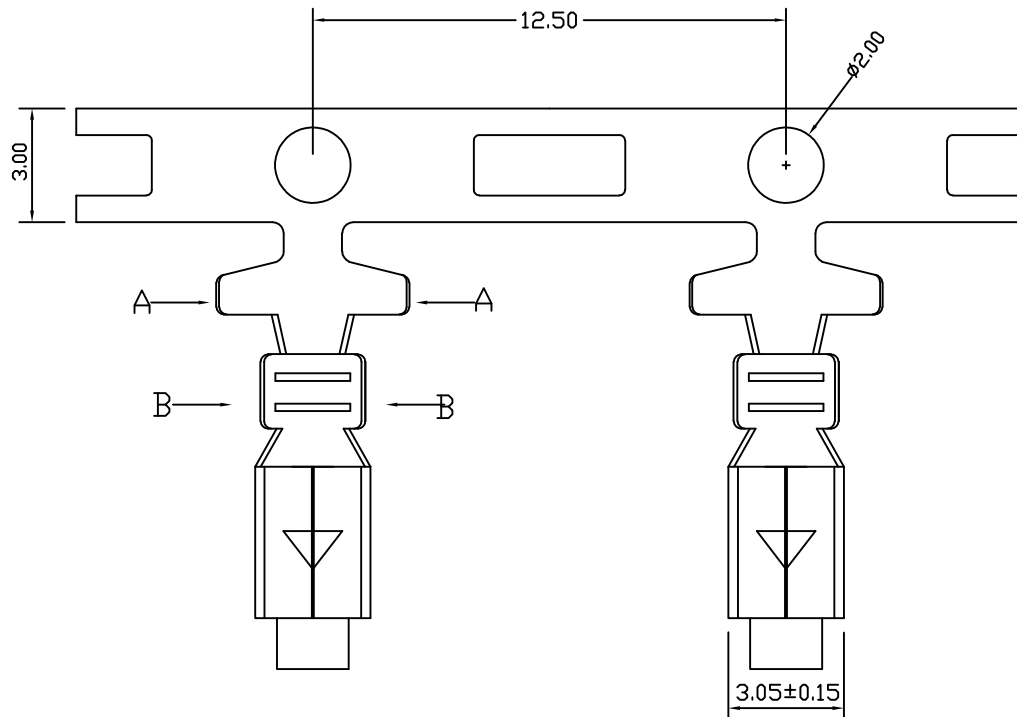
5

4

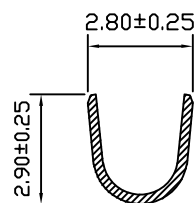
3

2

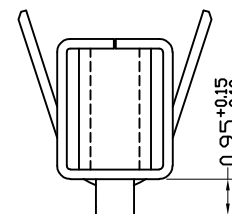
1



SECTION: A--A



SECTION: B--B



EST3960 T P H - 2 X - G

↑ 羿通代码+间距

↑ T 示意端子

↑ X 普通脚

↑ H 高脚

↑ E 增高型脚

↑ X 普通

↑ L 长

↑ S 短

↑ X 公端

↑ G 母端

↑ C 示意90°

↑ S 示意180°

0 素材

2 镀锡先冲后镀

3 镀锡先镀后冲

5G、15G 示意镀金5U'或15U'

1G 示意镀金1U'

P 磷铜

B 黄铜

E 合金铜

SPECIFICATIONS

- Applicable wire: AWG#16~#22
- Voltage rating: 250V DC/AC (rms)
- Current rating: 10A
- Withstand voltage: 800V AC(rms)
- Working Temperature: -25℃ to +85℃
- Insulation resistance: ≥1000MΩ
- Contact resistance: ≤0.02Ω

日期版次 REVISION	日期 DATE	变更内容 DESCRIPTION	核 准 APPROVAL BY



东莞市羿通实业有限公司
DONGGUAN EASTOM ELECTRONIC Co., Ltd.

料号PART NO: EST3960TPH-2X-G

品名 TITLE: VH3.96-T 高脚

材料:

单位: MM

包装规格:

比例: 1:1

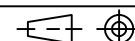
制图:

审核:

核准:

日期: 2022. 8. 8

一般公差
GENERAL TOLERANCE
X.X ±0.30
X.XX ±0.25
ANGLE ±1°



EST