

13790510059

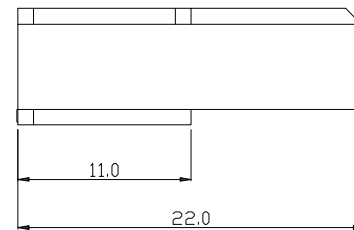
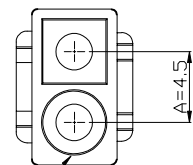
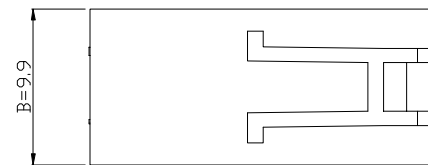
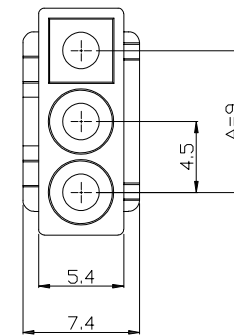
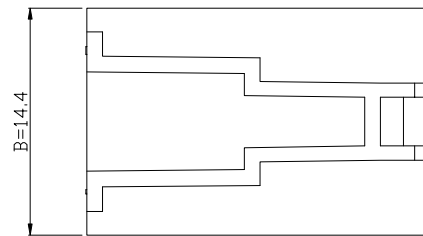
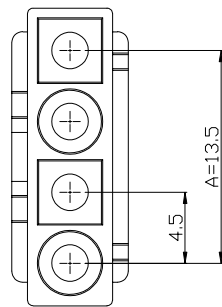
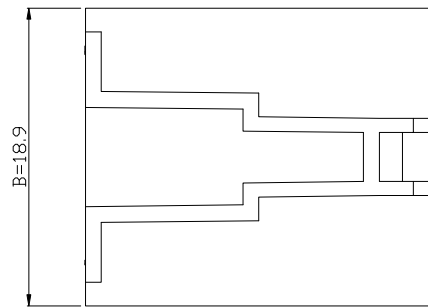
5

4

3

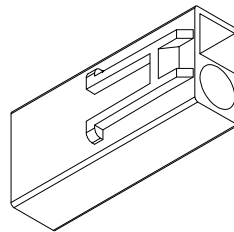
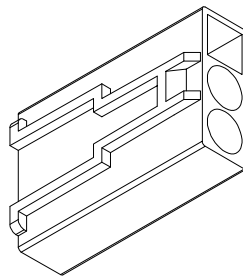
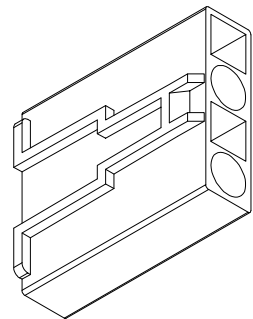
2

1



Poles	Dimensions mm	
	A	B
1*2P	4.5	9.9
1*3P	9.0	14.4
1*4P	13.5	18.9

circuit 1



EST4501 H - 1*NP X - B - X

↑ 羿通代码+间距 ↑ PIN数 ↑ X本色 ↑ X公胶壳
↑ 1示意单排 ↑ 2示意双排 ↑ B黑色 ↑ G母胶壳
↑ C刺破 ↑ L示意LOCK TYPE ↑ R红色 ↑ U超薄F防呆型
↑ L蓝色 ↑ HV带高凸点 ↑ Y黄色 ↑ LC带低凸点
↑ G绿色 ↑ K卡槽 ↑ C透明 ↑ E有耳

H示意胶壳,
H后无数字默认材质V0
H后带数字2示意材质V2

Main Specifications

- 1、Poles:1*2 to 1*4P
- 2、Current rating: 10A AC,DC
- 3、Voltage rating: 300V AC,DC
- 4、Temperature range: -25℃ to +85℃
- 5、Contact resistance: ≤20mΩ
- 6、Insulation resistance: ≥1000MΩ
- 7、Withstand voltage:1500V AC/minute
- 8、Applicable wire: AWG #26 to #18



东莞市羿通实业有限公司
DONGGUAN EASTOM ELECTRONIC Co., Ltd.

料号PART NO:EST4501H-1*NPX-B-G

品名 TITLE:EL4.5-H母(带扣)

材料:

单位:

MM

包装规格:

比例:

1:1

制图:

审核:

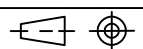
核准:

日期:

2022. 9. 3

日期版次
REVISION日期
DATE变更内容
DESCRIPTION核 准
APPROVALBY

一般公差
GENERAL TOLERANCE
X.X ±0.30
X.XX ±0.25
ANGLE ±1°



6

5

4

3

2

1

YL